



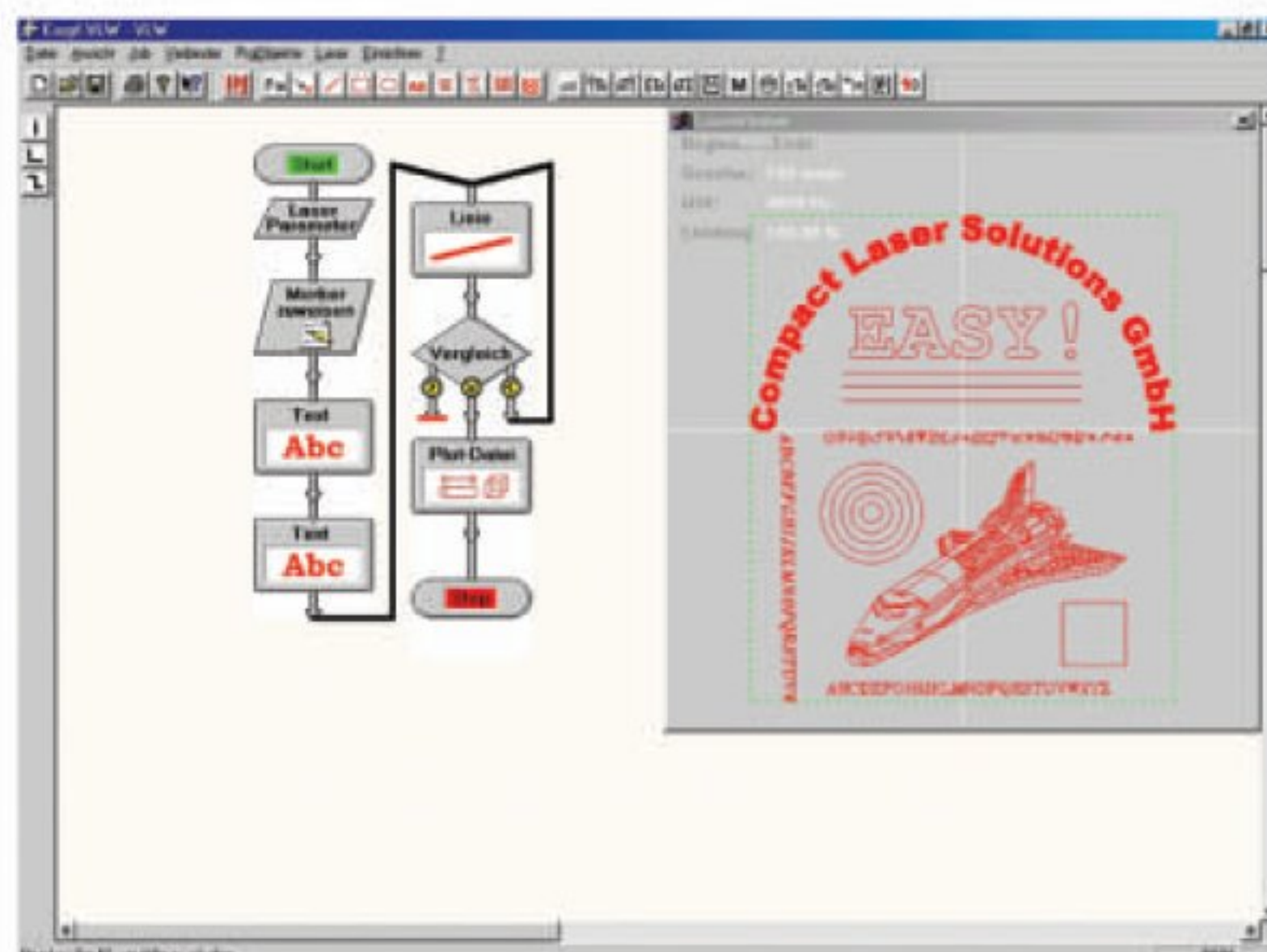
## → SOFTWARE Visual Laser Write (VLW)

Whilst developing the software, CLS has taken user convenience as the main consideration. The result: A versatile, most advanced laser marking software with

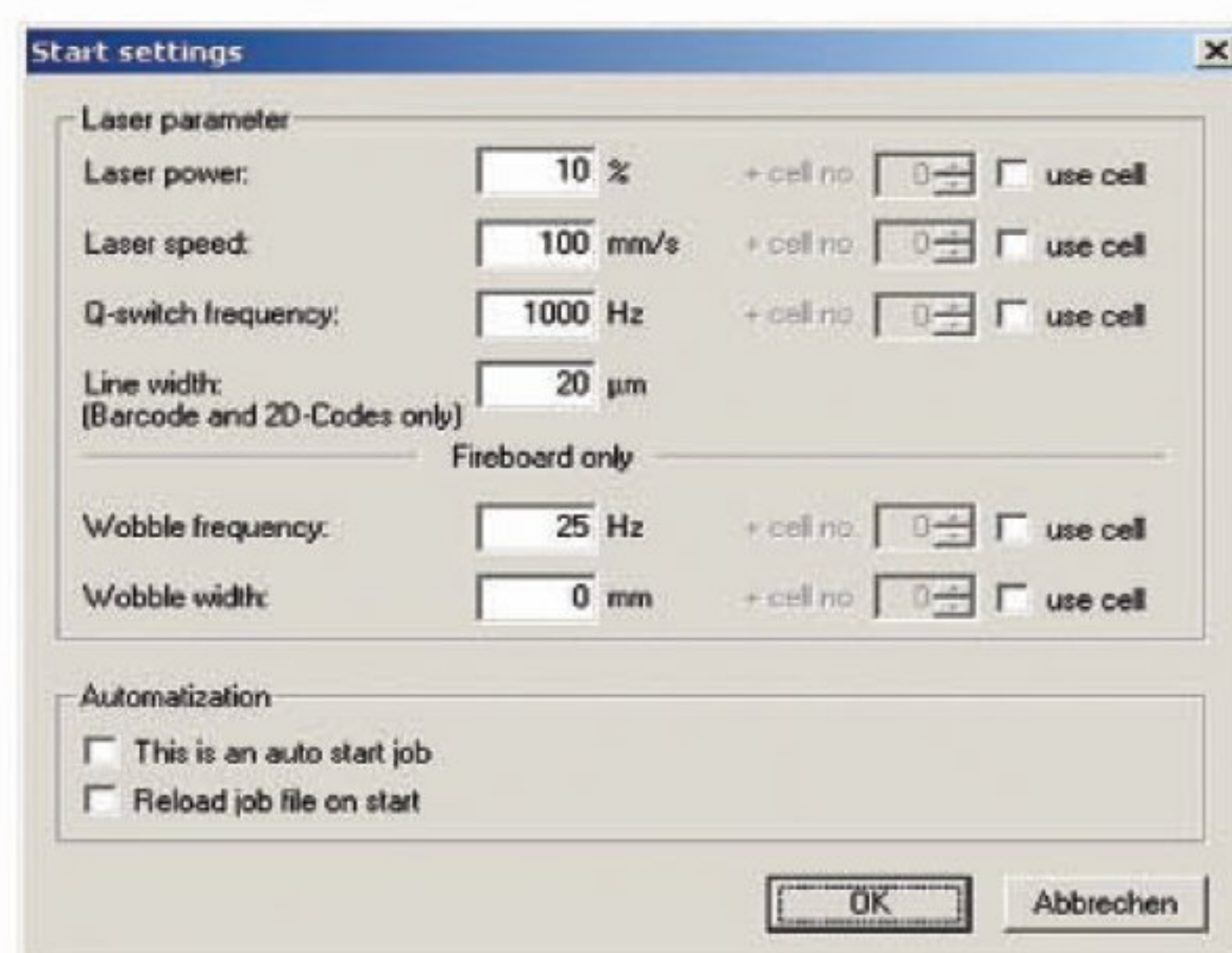
- Windows functionality
- Easy to use flow chart techniques
- User friendly WYSIWYG
- Laser control by serial port interface (RS 422)

**Software** Visual Laser Write (VLW)  
High-Speed Vector Mark Technology  
High Precision Bitmap Mark Technology

**Desktop** Graphical base  
Preview- and zoom function



**Laser control** Software adjustable marking parameters  
(Power, Speed, Frequency)



\*WINDOWS® is a registered trademark of the Microsoft Corporation, USA

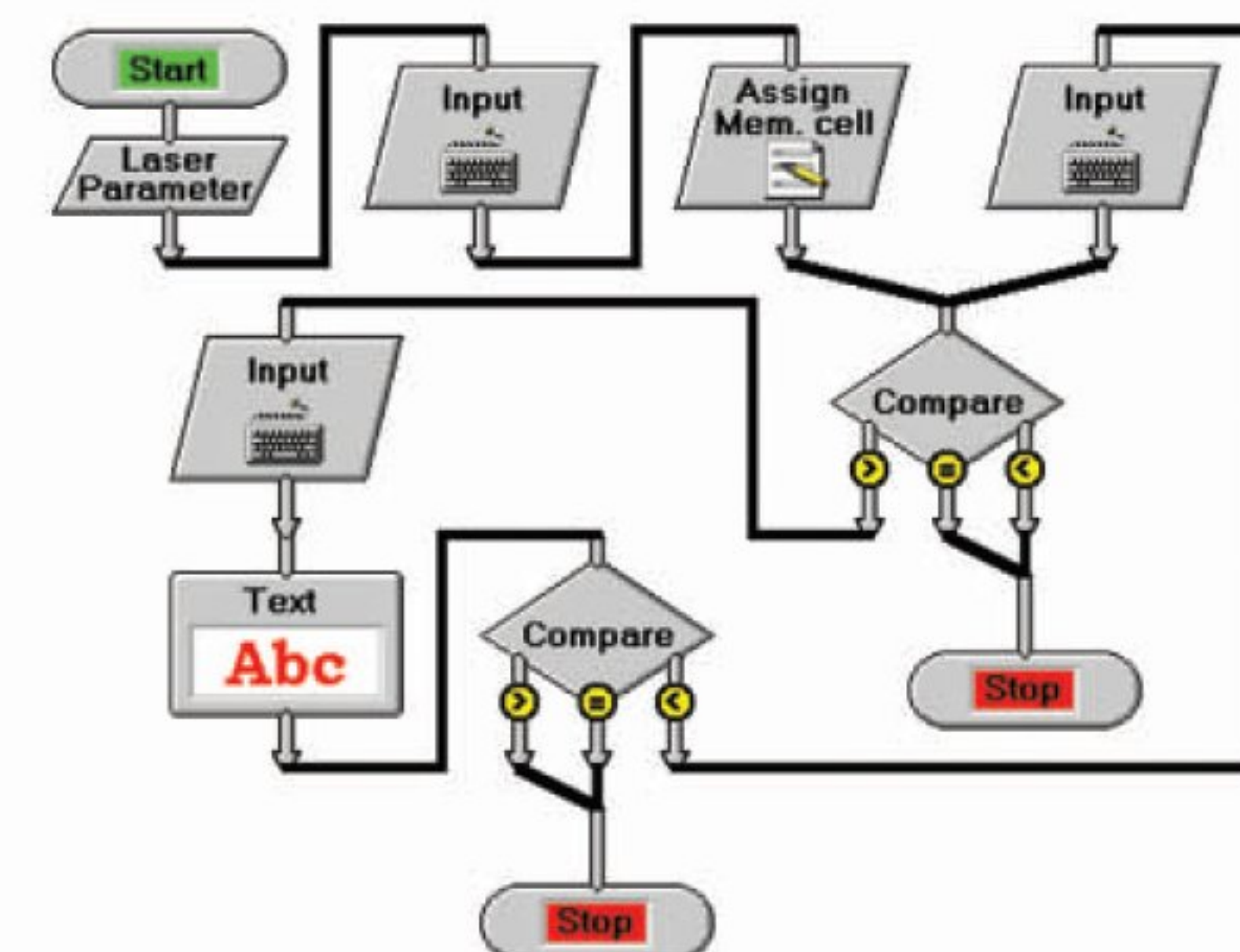


**Programfunctions** Graphical elements  
Standard Windows-fonts plus extended text functions  
Mirroring/rotation of marking content  
Free scale options  
Vector (HPGL) and Pixel (BMP) file import  
Extended barcode and Data-Matrix Code libraries



**Other features** Automatic date/time function  
In-/decrementing for serialisation  
5-axis control  
Free programmable digital in-/outputs  
Free programmable functions in Visual Basic  
Data storage functions

**Languages** German, English, Spanish, Japanese, Chinese



\*WINDOWS® is a registered trademark of the Microsoft Corporation, USA